



SIMULATION ASSISTED EMERGENCY MEDICINE PROCEDURES COURSE (SEMP)

Apr 26, 2018 (Thu)
Nov 23, 2018 (Fri)
0800-1600
CESEI, Vancouver, BC

TARGET AUDIENCE: Physicians practicing emergency care; interprofessional teams of physicians, intensive care physicians, anesthesiologists, nurses, paramedics, respiratory therapists

Up to 30.0 Mainpro+ / 15.0 MOC Section 3

The SEMP course allows physicians providing emergency care to acquire, review and practice their skill in essential life-saving emergency procedures including:

- Needle cricothyrotomy and transtracheal jet ventilation
- Open cricothyrotomy
- Needle thoracostomy
- Guide-wire chest tube placement
- Intraosseous vascular access in adults
- Intraosseous vascular access in children
- Pericardiocentesis
- Central line vascular access, landmark technique
- Ultrasound-guided central line vascular access
- **Crisis resource management and strategies to reduce cognitive errors**

“Highly immersive simulations and amazing instructors made for a very engaging learning experience.”

– Past Participant

“I feel empowered to perform procedures more safely, under ultrasound-guidance, with efficiency, and confidence”

– Past Participant

“Every ER doctor should do this course once a year to maintain their skills in high-stakes and infrequently performed procedures

– Past Participant

COURSE FORMAT:

PHASE 1
Online Learning



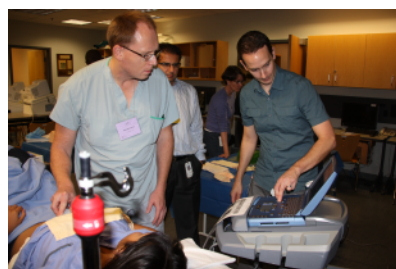
PHASE 2
Procedure performance on realistic models

PHASE 3
Highly immersive clinical scenarios



PHASE 4
Reflection and application in your clinical practice

Visit <https://youtu.be/gFv23z1AyII> for a sneak peek video!



ubccpd.ca/EMP2018

SEMP