

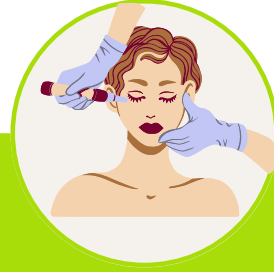
# Soiled Airway Approach



**S**

## **Suction**

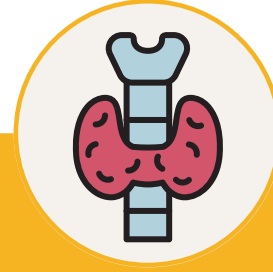
Larger radius = better!  
Use a DuCanto catheter (6.6mm internal diameter)



**A**

## **Assisted**

Anticipate contamination and ask for help



**L**

## **Laryngeal**



**A**

## **Airway**

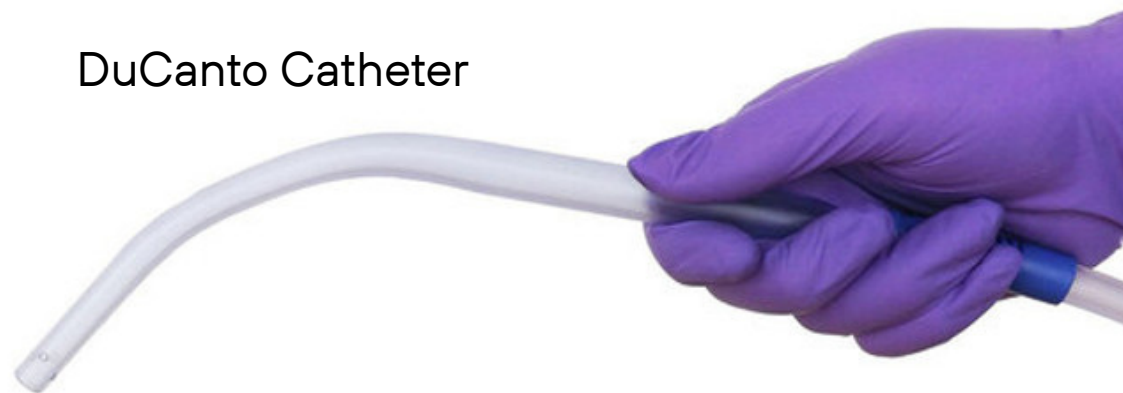
Wedge suction into esophagus while intubating



**D**

## **De-contamination**

DuCanto Catheter



based on the video demonstration by Jim DuCanto:  
<https://www.youtube.com/watch?v=Jaq-vHbcGi0>

Epiglottis

Base of the tongue

Vocal chords

Arytenoids

Endotracheal tube

Vestibular fold

Larynx

Esophagus

DuCanto catheter placement during intubation

